

Keeping it R.E.A.L:
Culturally Relevant Teaching in the Choir Classroom
WMEA - Saturday, Feb 19, 2022 8:30 AM



Why aren't marginalized populations called to participate?

Do student in my community feel comfortable singing in the space and provide?

Is my content a reflection of who they are?

Does the environment in question give everyone a voice?

Does your environment reflect our brand ethos? Who is on my team?

ASK YOURSELF.. IS THIS R.E.A.L?

RELEVANT
ENGAGING
ARTISTIC
LONGEVITY





RELEVANT

What is your classroom culture?

How are your students, school, and community impacted?

Can you or your students connect to the activity, piece, and/or objectives?

What references are you using in order to connect?

Are your lesson plans evolving?

Are YOU evolving?

What resources are you using?

How do you introduce a piece (hook)?

Are you present during their input.. or combative?



ENGAGING

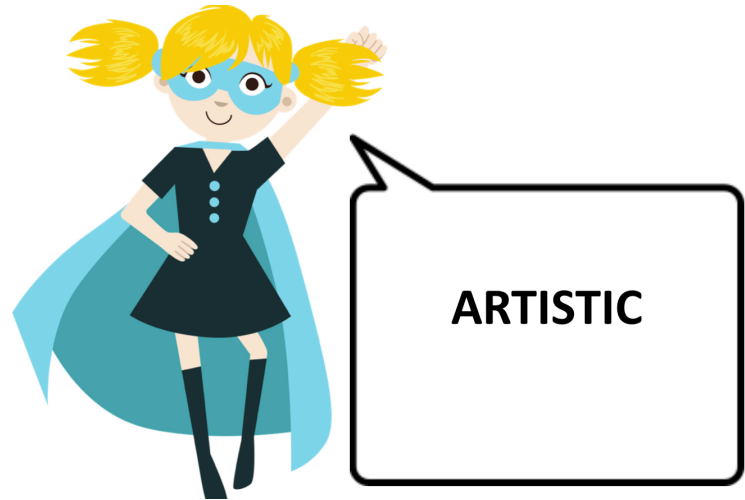
Are you being authentic to the piece?

Are you being authentic in your expression of self?

Do your students know why you fell in love with music?

How do you introduce yourself (first impressions)?

How do you introduce a piece?



How do you know what you have done will have a lasting impact?

The power of apologies and acknowledging ignorance (including yourself)

Addressing mental health and its impact in daily life

What are your examples?

Notes: